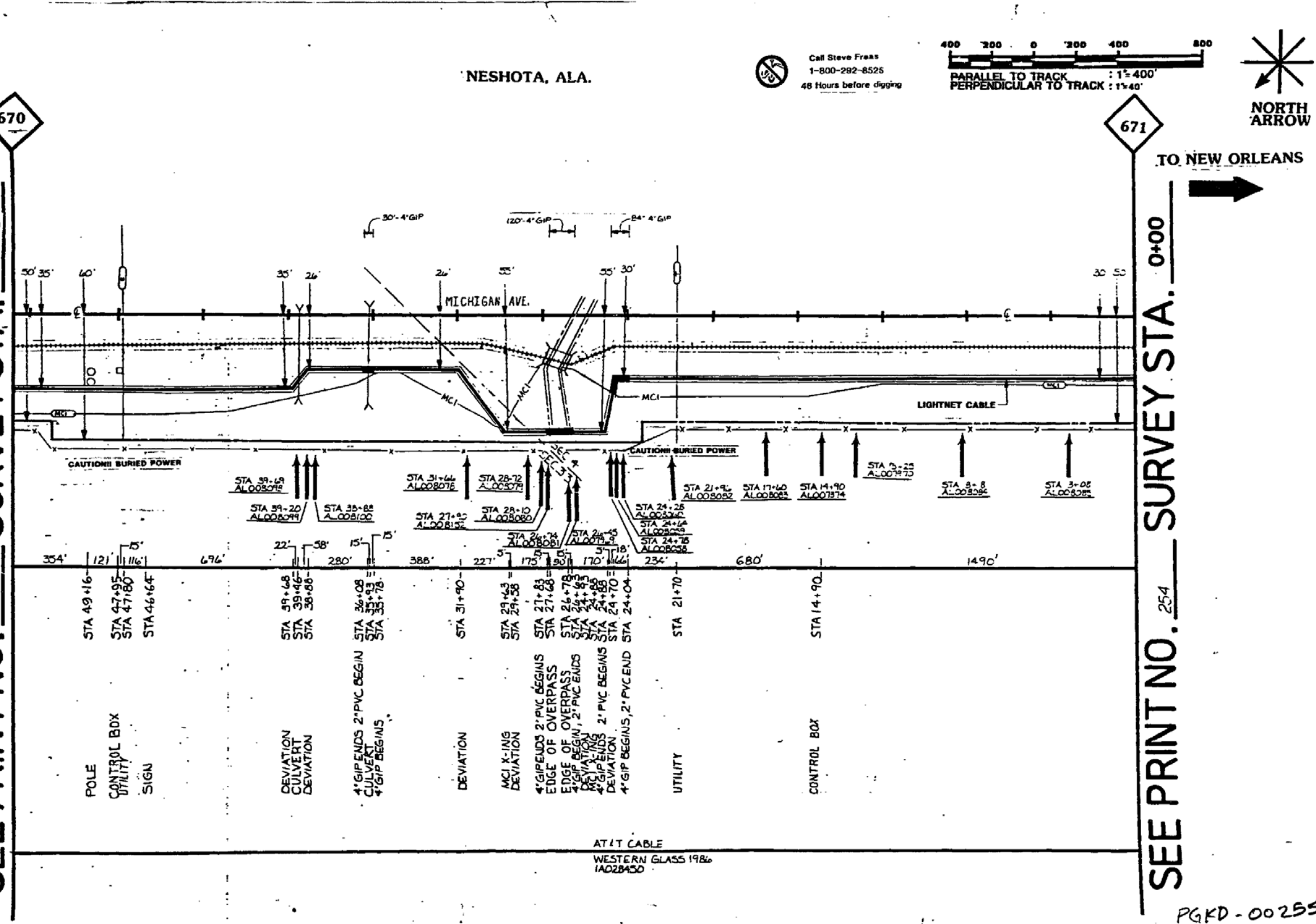


SEE PRINT NO. 256 SURVEY STA. 52+70



NESHOTA, ALA.

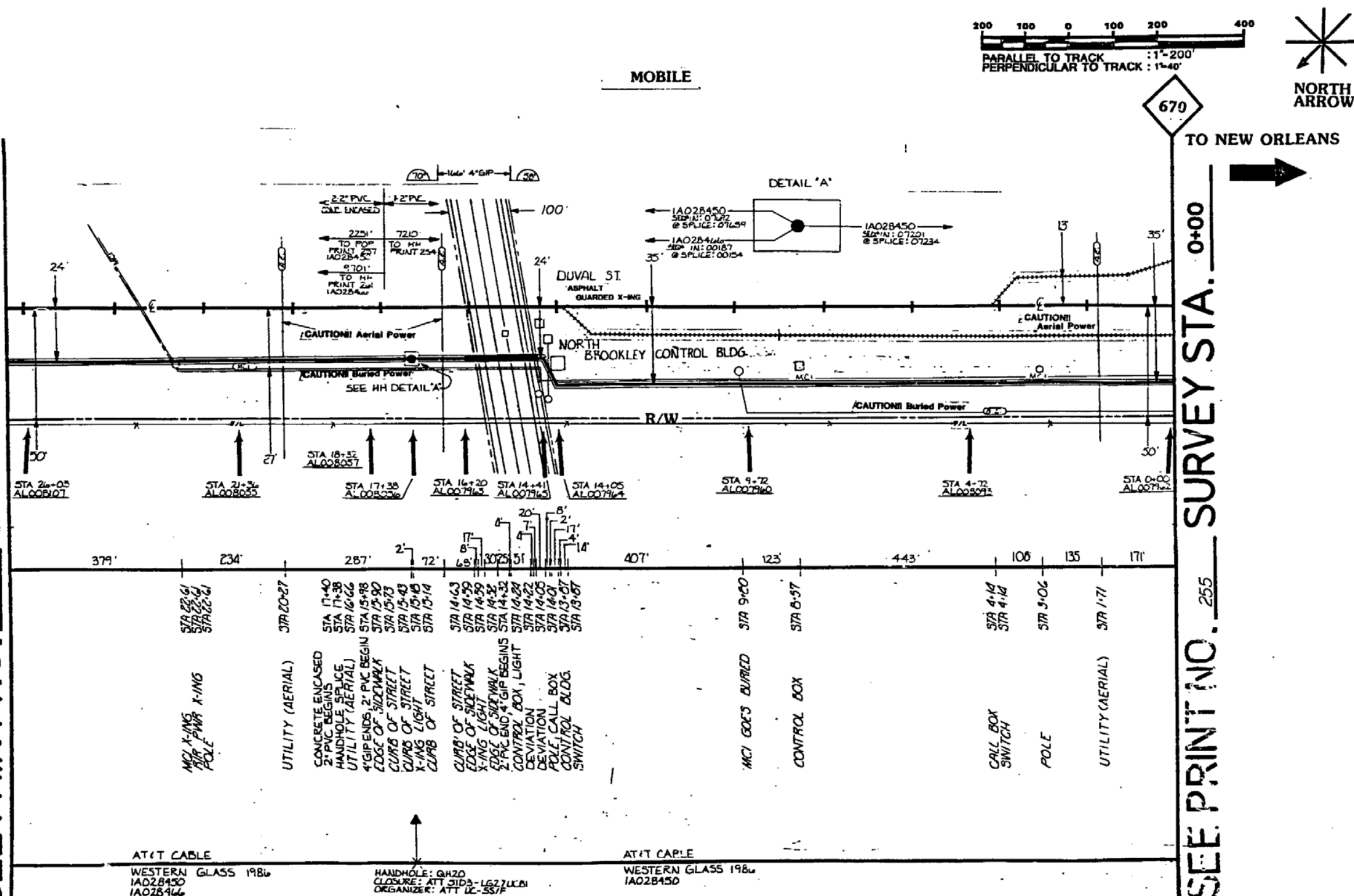
Call Steve Freas
1-800-292-8525
48 Hours before digging



MATERIAL LIST

MATERIAL	QUANTITY
CABLE	
GIP4"	234'
GIP2"	
PVC 4"	
PVC 2"	50'±
BURIED CABLE MARKERS	17
HANDHOLE	
INNERDUCT	
PROPRIETARY INFORMATION NOT FOR DISTRIBUTION	
REVISIONS	
ISSUE DATE	DESCRIPTIONS
12-23-84	AS-BUILT
WBS : 208202 SEQ: PRINT No. 255 OF 560 REGION: SOUTHEAST ENG. CO: TE STATE: ALABAMA CNTY: MOBILE APPVD BY: DATE: 	
ROUTE: NEW ORLEANS LOUISIANA PROJECT: TO MOBILE ALABAMA TITLE: APPVD BY: DATE:	

SEE PRINT NO. ²⁵⁷ SURVEY STA. ¹²⁶⁺⁴⁰



FGKD - 00256

MATERIAL	QUANTITY
CABLE	
GIP4"	none
GIP2"	
PVC 4"	
PVC 2"	3374
BURIED CABLE MARKERS	10
HANDHOLE	1
INNERDUCT	

PROPRIETARY INFORMATION
NOT FOR DISTRIBUTION

REVISIONS


ISSUE DATE	DESCRIPTIONS
12-23-80	AS - 301



MP 670-669 PG 1 OF 3

WBS : 208302

SEQ:	PRINT No: 256 OF 560
REGION: SOUTHEAST	ENG. CO: TEI
STATE: ALABAMA	CNTY: MOBILE
APPVD BY:	DATE:


LIGHTNET
 ROUTE NEW ORLEANS, LOUISIANA
 PROJECT TO MOBILE, ALABAMA
 TITLE:

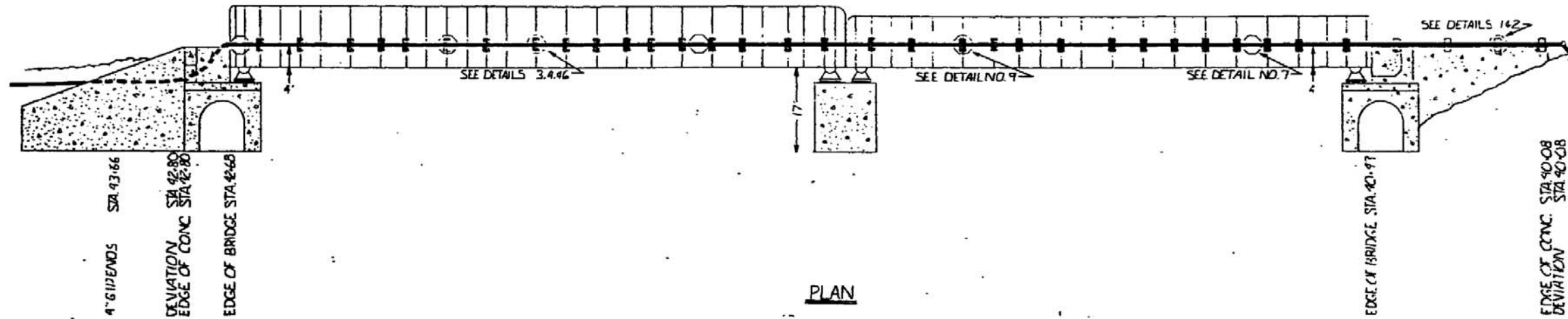
APPVD BY:	DATE:
--------------	-------

TO MOBILE

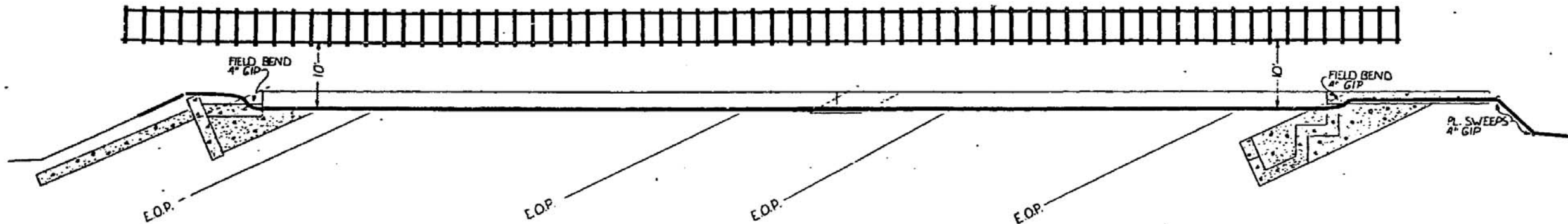
TO MONTGOMERY

PROFILE
STEEL TRUSS

18' 8' 10' 6' 5' 8' 8' 10' 6' 6' 6' 5' 6' 6' 6' 9' 7' 9' 8' 10' 6' 5' 8' 10' 6' 6' 6' 6' 6' 10' 10' 10' 10' 10'



PLAN



MATERIAL LIST

SYMBOL	MATERIAL ITEMS	UNITS
□	HANGER ASSEMBLY	33
○	EXPANSION JOINTS	5
	CORE BORES	@
	6" DIA. STEEL SLEEVES	@
□	PIPE STRAP	4



WBS : 208302

SEQ:	PRINT No: 257A OF 58C
REGION: SOUTHEAST	ENG. CO: TE
STATE: ALABAMA	CNTY: MOBILE
APPVD BY:	DATE:

LIGHTNET

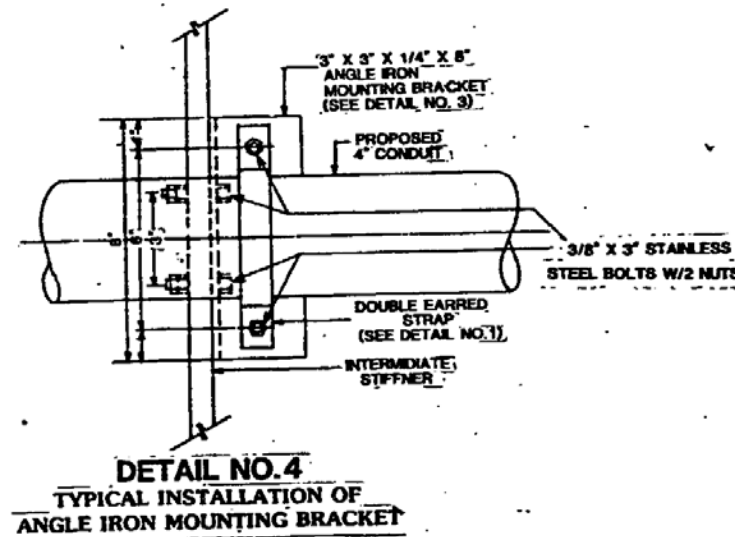
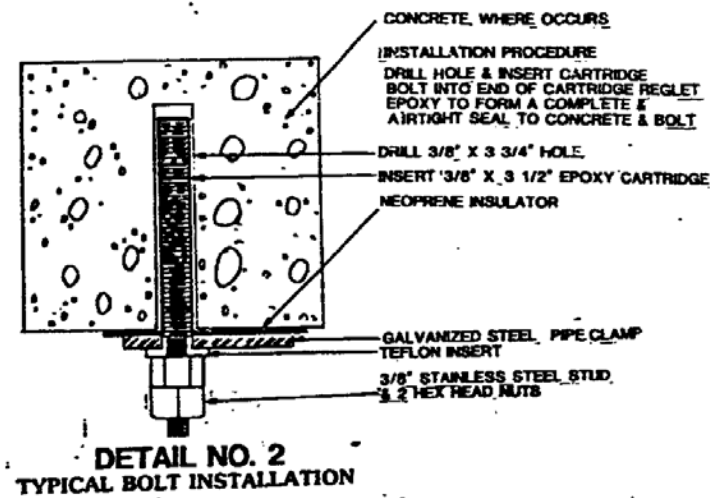
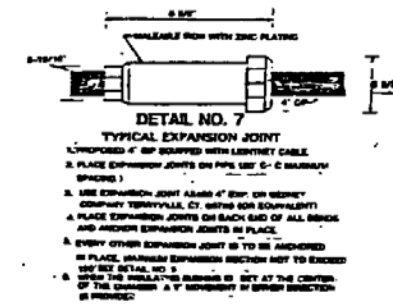
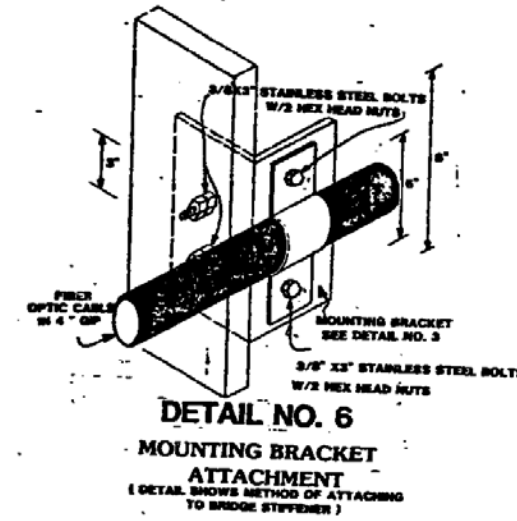
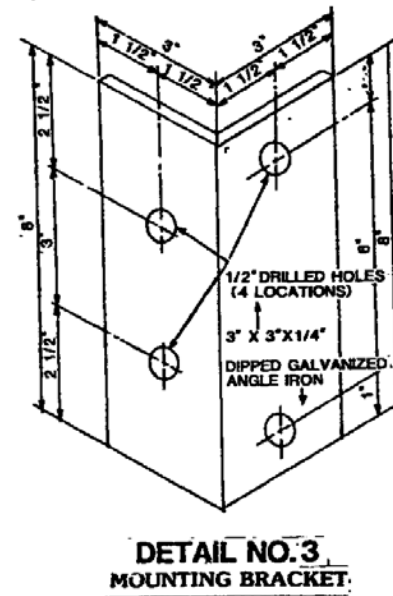
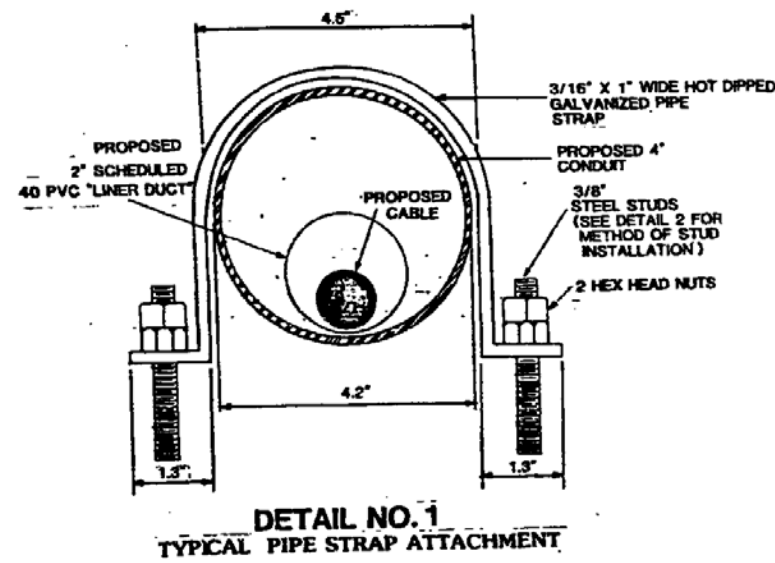
ROUTE NEW ORLEANS, LOUISIANA

PROJECT TO MOBILE, ALABAMA

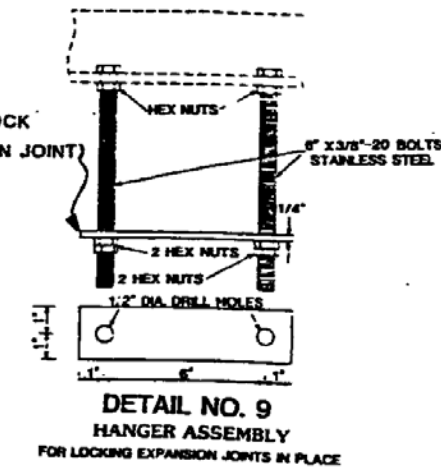
APPVD BY: DATE:

PGKD - 00257A

HANGER ASSEMBLY DETAILS

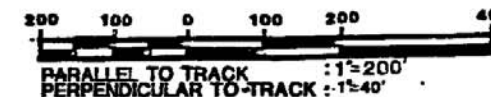
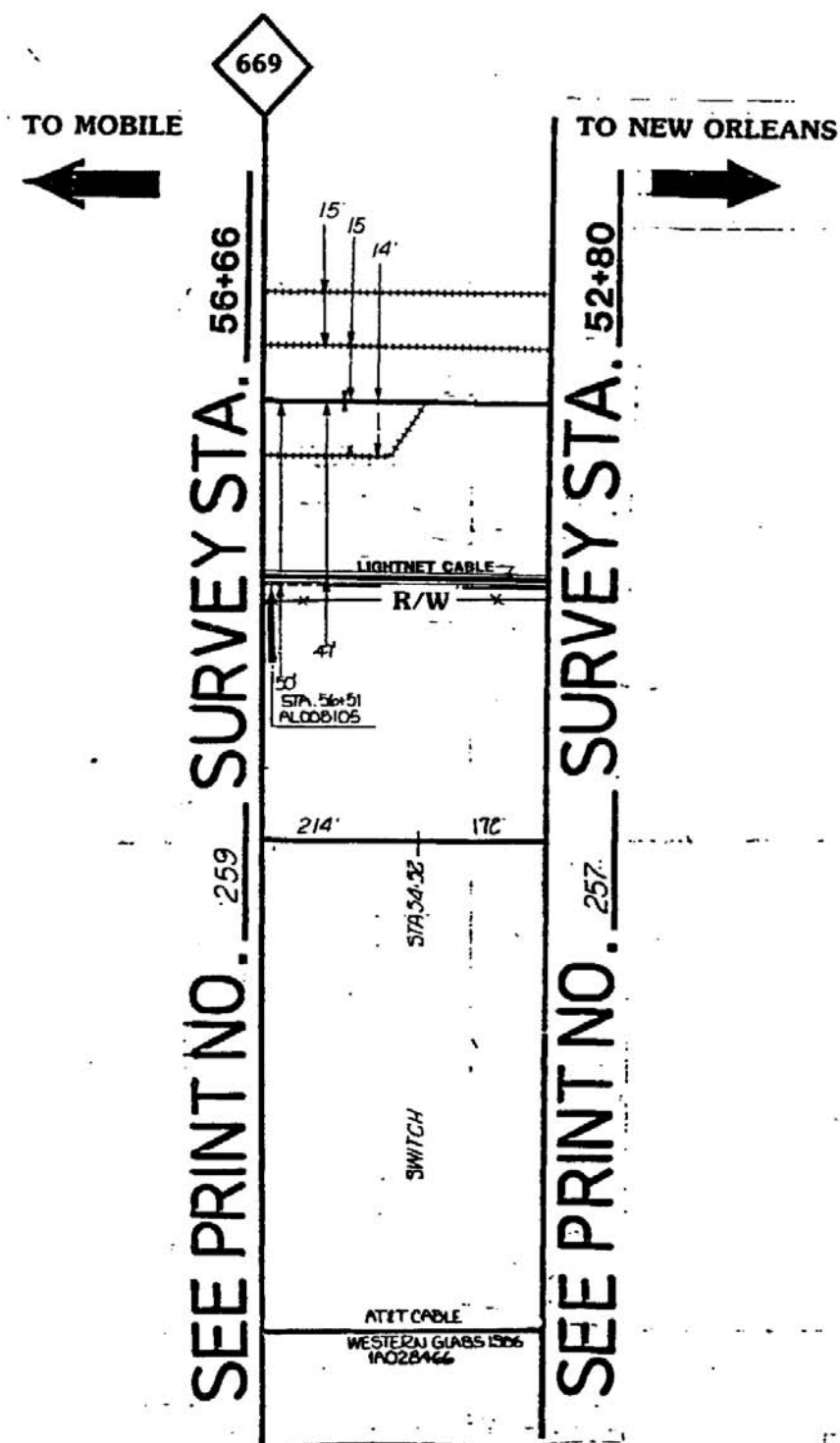


NOTE: ADJUST FLATE TO LOCK
4\" GIP (AT EXPANSION JOINT)
IN PLACE.





WBS : 208302	
SEQ:	PRINT No: 257B OF 560
REGION: SOUTHEAST	ENG. CO: TEI
STATE: ALABAMA	CNTY: MOBILE
APPVD BY:	DATE:
ROUTE NEW ORLEANS, LOUISIANA	
PROJECT TO MOBILE, ALABAMA	
TITLE:	
APPVD BY:	DATE:

PGKD- 00257B



MATERIAL LIST

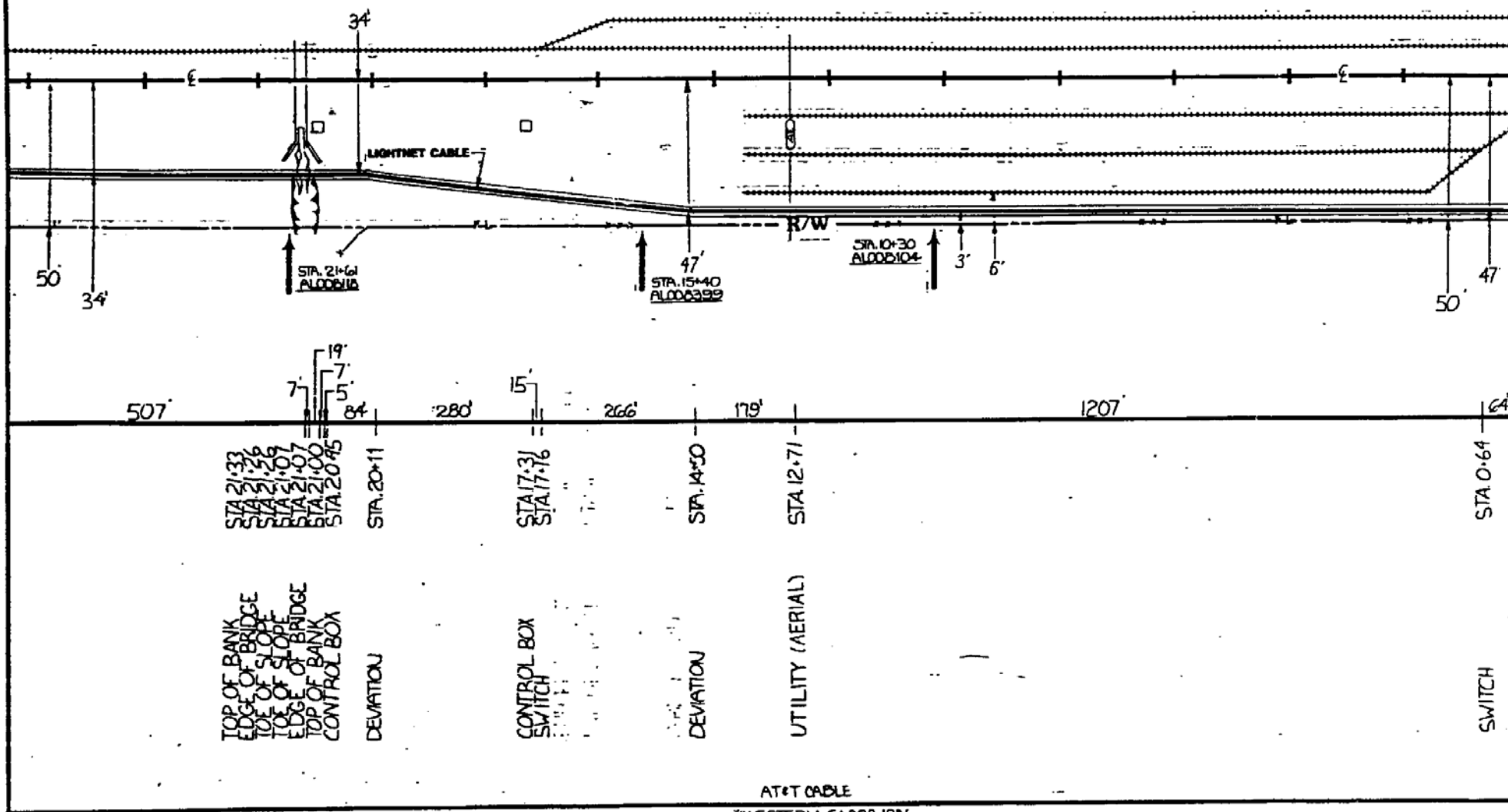
MATERIAL	QUANTITY
CABLE	
GIP4"	
GIP2"	
PVC 4"	
PVC 2"	±50'
BURIED CABLE MARKERS	
HANDHOLE	
INNERDUCT	
PROPRIETARY INFORMATION NOT FOR DISTRIBUTION	
REVISIONS	
ISSUE DATE	DESCRIPTIONS
12-23-86	AS BUILT
 MP 670-669 PG 3 OF 3 WBS : 208302	
SEG:	PRINT No: 258 OF 560
REGION: SOUTHEAST	ENG. CO: TEI
STATE: ALABAMA	CNTY: MOBILE
APPVD BY:	DATE:
 ROUTE NEW ORLEANS, LOUISIANA PROJECT TO MOBILE, ALABAMA TITLE:	
APPVD BY:	DATE:

PGKD-00258

TO MOBILE



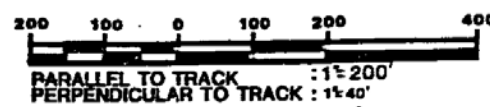
SEE PRINT NO. 260 SURVEY STA. 26+40



MOBILE



Call Steve Fraas
1-800-292-8525
48 Hours before digging



TO NEW ORLEANS



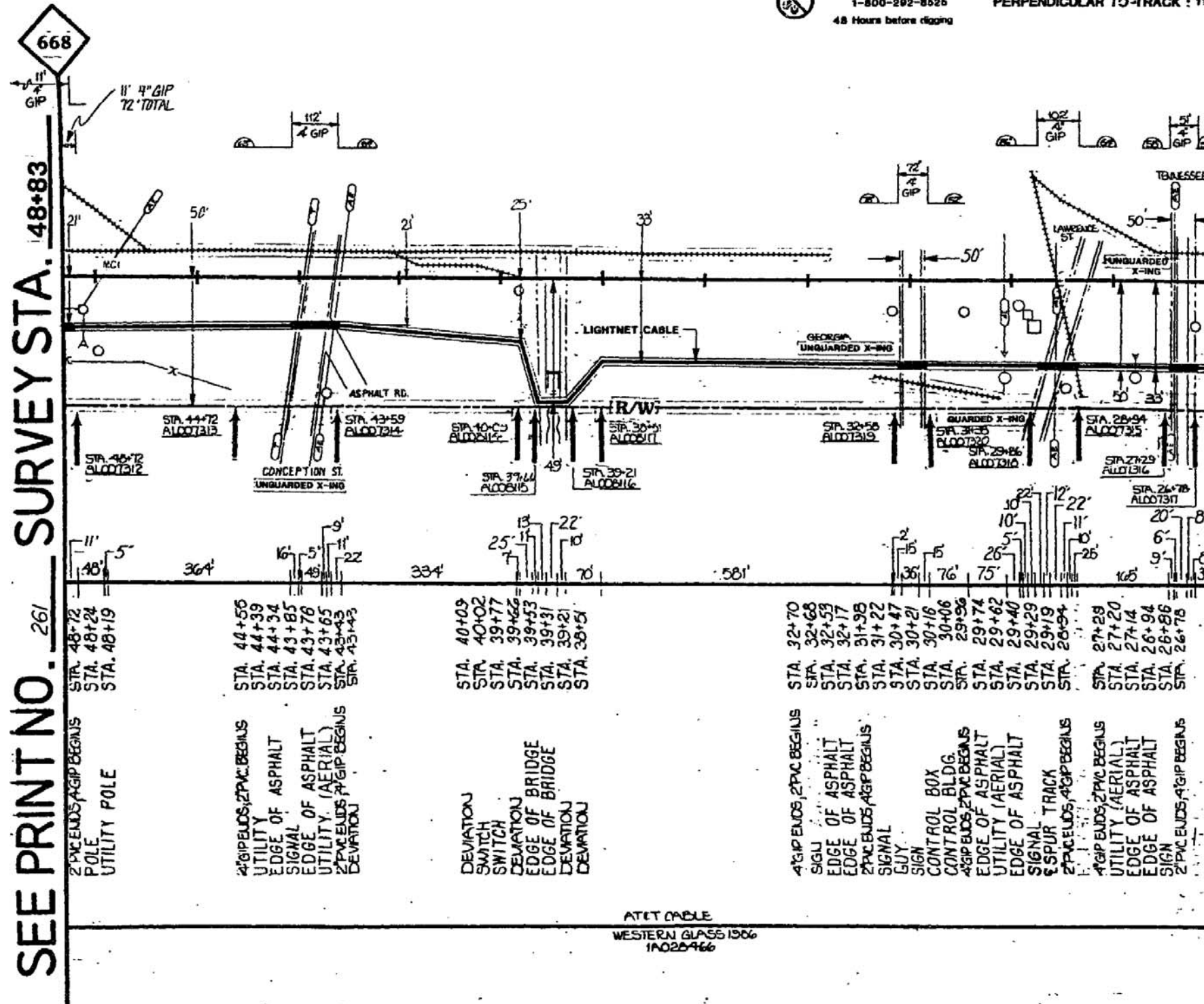
SEE PRINT NO. 258 SURVEY STA. 0+00

MATERIAL LIST

MATERIAL	QUANTITY
CABLE	
GIP 4"	
GIP 2"	
PVC 4"	
PVC 2"	2640'
BURIED CABLE MARKERS	3
HANDHOLE	
INNERDUCT	
PROPRIETARY INFORMATION NOT FOR DISTRIBUTION	
REVISIONS	
ISSUE DATE	DESCRIPTIONS
12-23-86	AS BUILT
MD 14A-1208 SHT 1 OF 2	
WBS : 208202	
SEG:	PRINT No: 259 OF 562
REGION: SOUTHEAST	ENG. CO: TEI
STATE: ALABAMA	CNTY: MOBILE
APPVD BY:	DATE:
ROUTE NEW ORLEANS LOUISIANA PROJECT TO MOBILE ALABAMA TITLE:	
APPVD BY:	DATE:

PGKD -00259

TO MOBILE



TO NEW ORLEANS



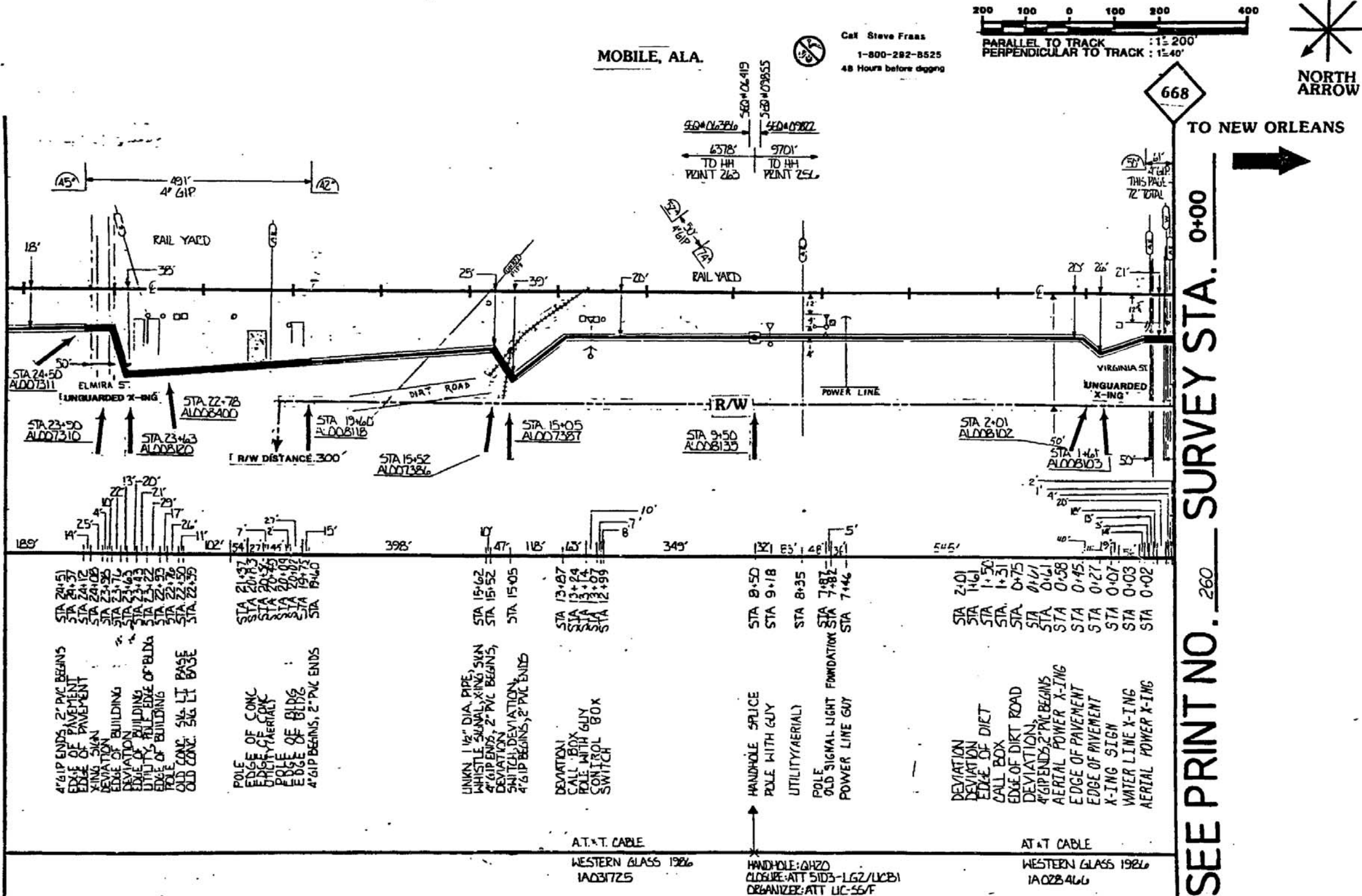
MATERIAL LIST

MATERIAL	QUANTITY
CABLE	
GIP4"	348'
GIP2"	
PVC 4"	
PVC 2"	1895'
BURIED CABLE MARKERS	13
HANDHOLE	
INNERDUCT	
PROPRIETARY INFORMATION NOT FOR DISTRIBUTION	
REVISIONS	
ISSUE DATE	DESCRIPTIONS
12-23-86	AS BUILT
WBS : 208202	
SEG:	PRINT No. 222 OF 550
REGION: SOUTHEAST	ENG. CO: TE
STATE: ALABAMA	CNTY: MOBILE
APPVD BY:	DATE:
ROUTE NEW ORLEANS LOUISIANA	
PROJECT TO MOBILE ALABAMA	
TITLE:	
APPVD BY:	DATE:

PGFD-00260

TO MOBILE
↑

SEE PRINT NO. 262 SURVEY STA. 26+40



MOBILE, ALA.

Call Steve Franks
1-800-282-8525
48 Hours before digging

PARALLEL TO TRACK : 1"=200'
PERPENDICULAR TO TRACK : 1"=40'



TO NEW ORLEANS
→

SEE PRINT NO. 260 SURVEY STA. 0+00

MATERIAL LIST

MATERIAL	QUANTITY
CABLE	
GIP4"	602'
GIP2"	
PVC 4"	
PVC 2"	2041'
BURIED CABLE MARKERS	10
HANDHOLE	
INNERDUCT	

PROPRIETARY INFORMATION
NOT FOR DISTRIBUTION

REVISIONS

ISSUE DATE	DESCRIPTIONS
12-23-86	AS BUILT



MP 1003-1007 SHT 1 OF 2

WBS : 208302	SEG :	PRINT No: 261 OF 560
REGION: SOUTHEAST	STATE: ALABAMA	ENG. CO: TEI
CNTY: MOBILE	DATE:	



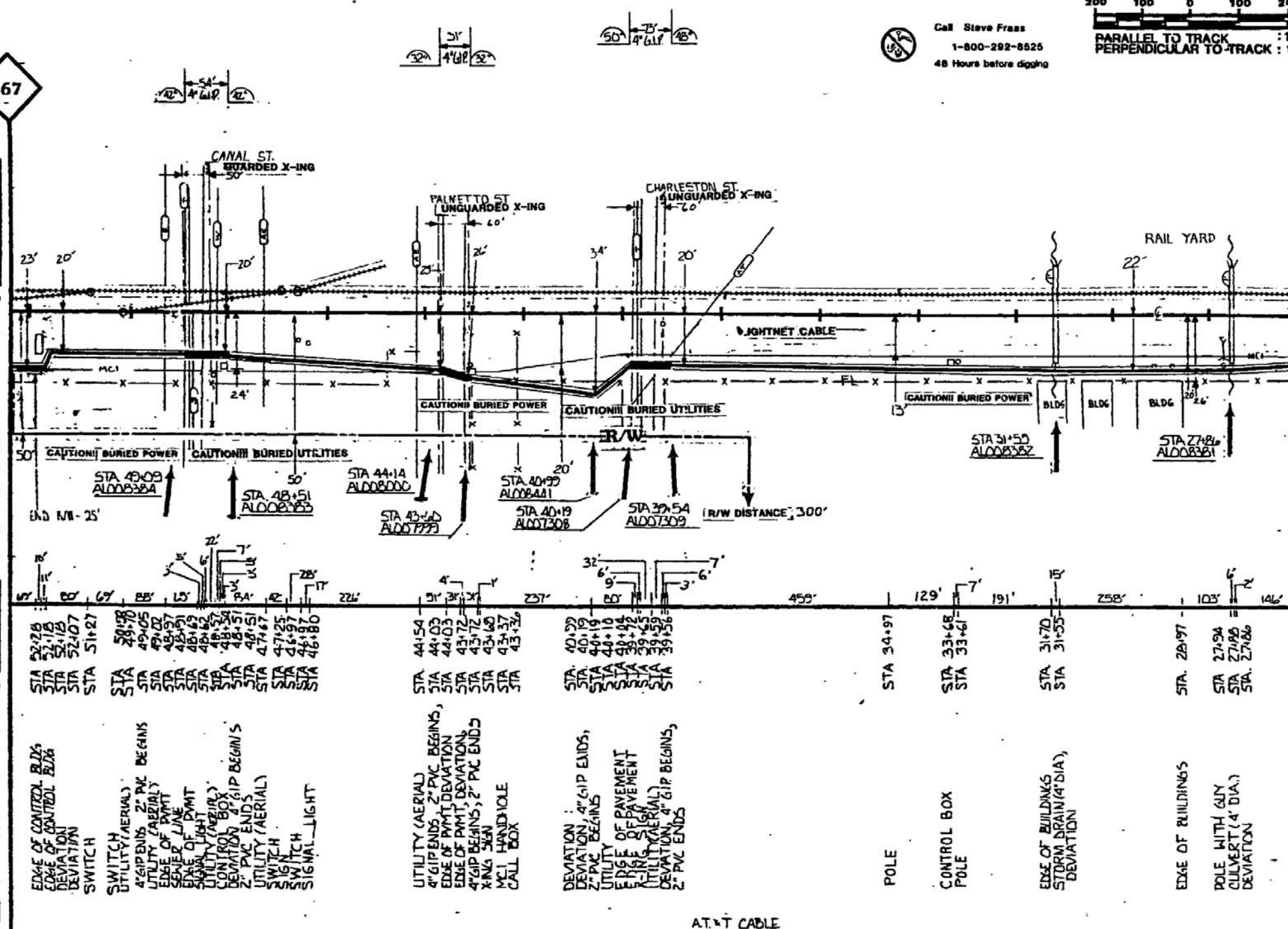
ROUTE NEW ORLEANS, LOUISIANA
PROJECT TO MOBILE, ALABAMA

APPVD BY:	DATE:
-----------	-------

PGKD - 00261

SEE PRINT NO. 263 SURVEY STA. 152+97

667



AT & T CABLE
WESTERN GLASS 1986
1A031725



Call Steve Franz
1-800-292-8626
48 Hours before digging



1 TO NEW ORLEANS

SEE PRINT NO. 261 SURVEY STA. 26+40

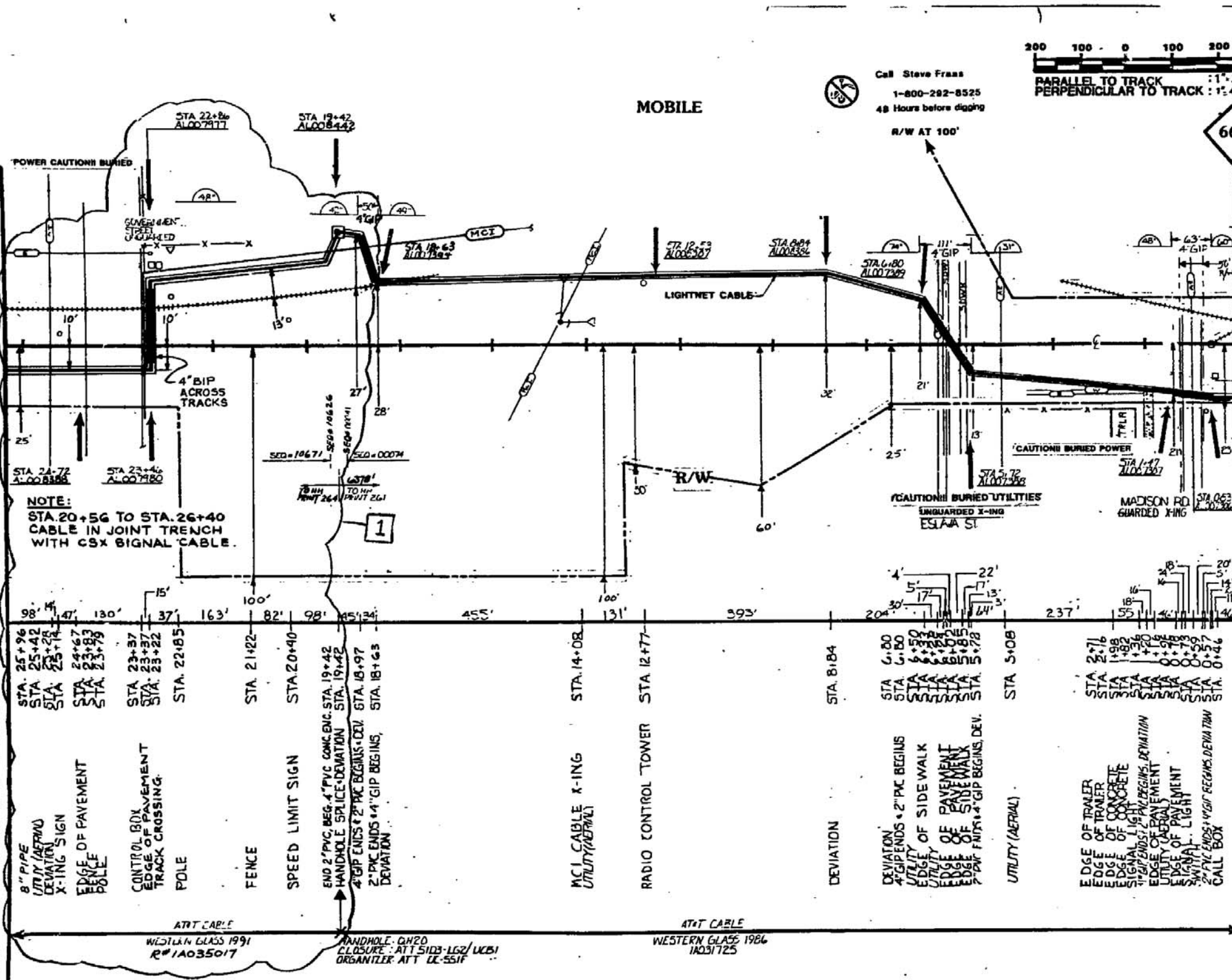
MATERIAL LIST

MATERIAL		QUANTITY
CABLE		
GIP4"		
GIP2"		
PVC 4"		
PVC 2"		2512'
BURIED CABLE MARKERS		3'
HANDHOLE		
INNERDUCT		
PROPRIETARY INFORMATION NOT FOR DISTRIBUTION		
REVISIONS		
ISSUE DATE	DESCRIPTIONS	
1223-846	AS BUILT	
 US Telecom.		
MP 1408-1417		SHT 2 OF 2
WBS : 208302		
SEG:	PRINT No: 262 OF 560	
REGION: SOUTHEAST	ENG. CO: TEI	
STATE: ALABAMA	CNTY: MOBILE	
APPVD BY:	DATE:	
		
ROUTE NEW ORLEANS, LOUISIANA PROJECT TO MOBILE, ALABAMA TITLE:		
APPVD BY:	DATE:	

PGKD - 00262

TO MOBILE
←

SEE PRINT NO. 264 SURVEY STA. 26+40



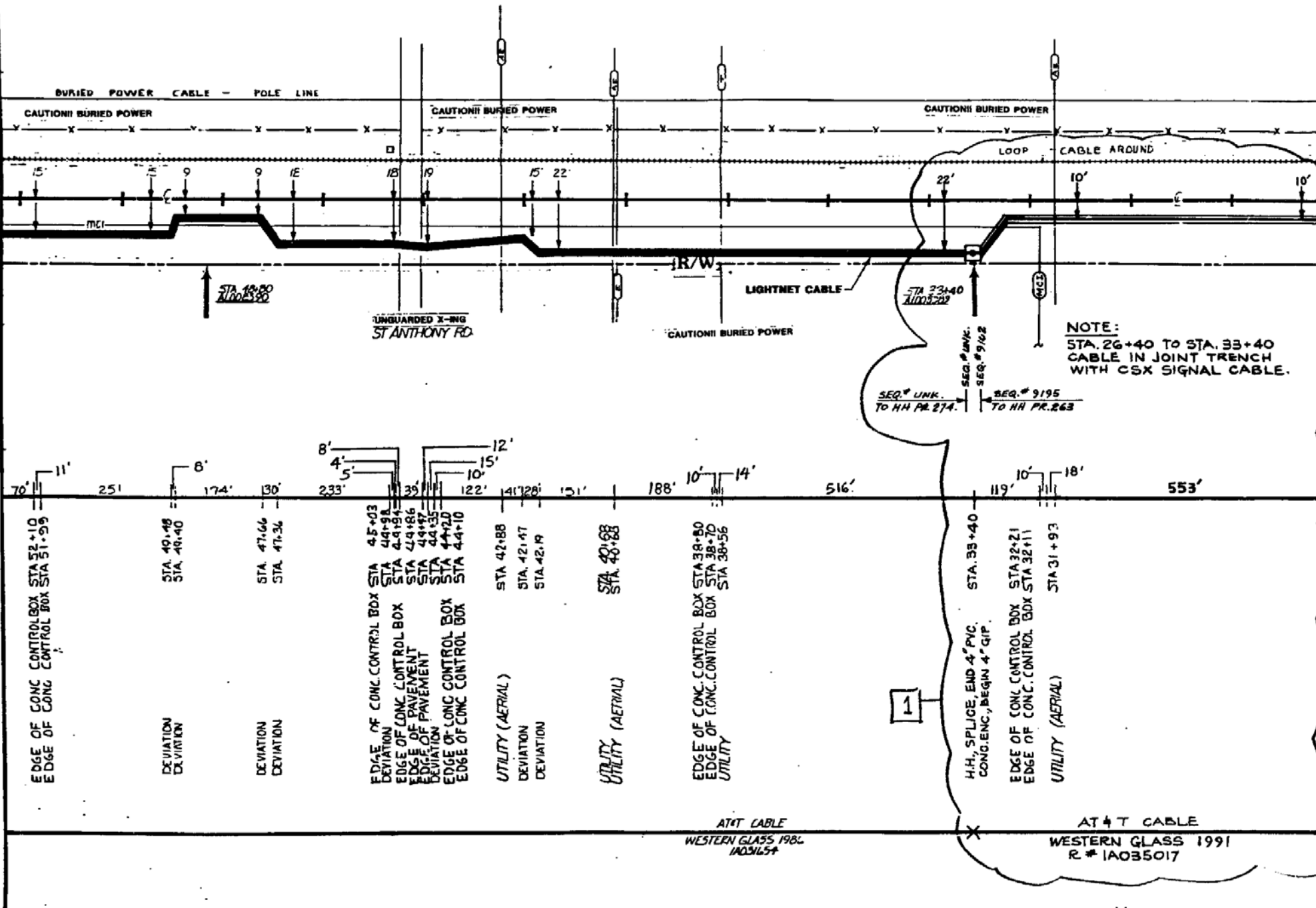
SEE PRINT NO. 262 SURVEY STA. 0+00

PC9KD-00263

MATERIAL LIST	
MATERIAL	QUANTITY
CABLE	
GIP4"	569
GIP2"	
PVC 4"	
PVC 2"	207
BURIED CABLE MARKERS	11
HANDHOLE	
INNERDUCT	
PROPRIETARY INFORMATION NOT FOR DISTRIBUTION	
REVISIONS	
ISSUE DATE	DESCRIPTIONS
12-23-86	AS-BUILT
1 6-13-91	RELOCATE, ENCASE & INSTALL NEW CABLE W.O. #AL90026GN.
MP 557-556 P.1 OF 3	
WBS : 208302	
SEG:	PRINT No: 263 OF 560
REGION: SOUTHEAST	ENG. CO: TEI
STATE: ALABAMA	CNTY: MOBILE
APPVD BY:	DATE:
ROUTE NEW ORLEANS, LOUISIANA	
PROJECT TO MOBILE, ALABAMA	
TITLE:	
APPVD BY:	DATE:

TO MOBILE
←

SEE PRINT NO. 265 SURVEY STA. 52+80



TO NEW ORLEANS
→

SEE PRINT NO. 263 SURVEY STA. 26+40



Call Steve Fraas
1-800-292-8525
48 Hours before digging



MATERIAL LIST

MATERIAL	QUANTITY
CABLE	
GIP4"	2640'
GIP2"	
PVC 4"	
PVC 2"	
BURIED CABLE MARKERS	2
HANDHOLE	
INNERDUCT	

REVISIONS

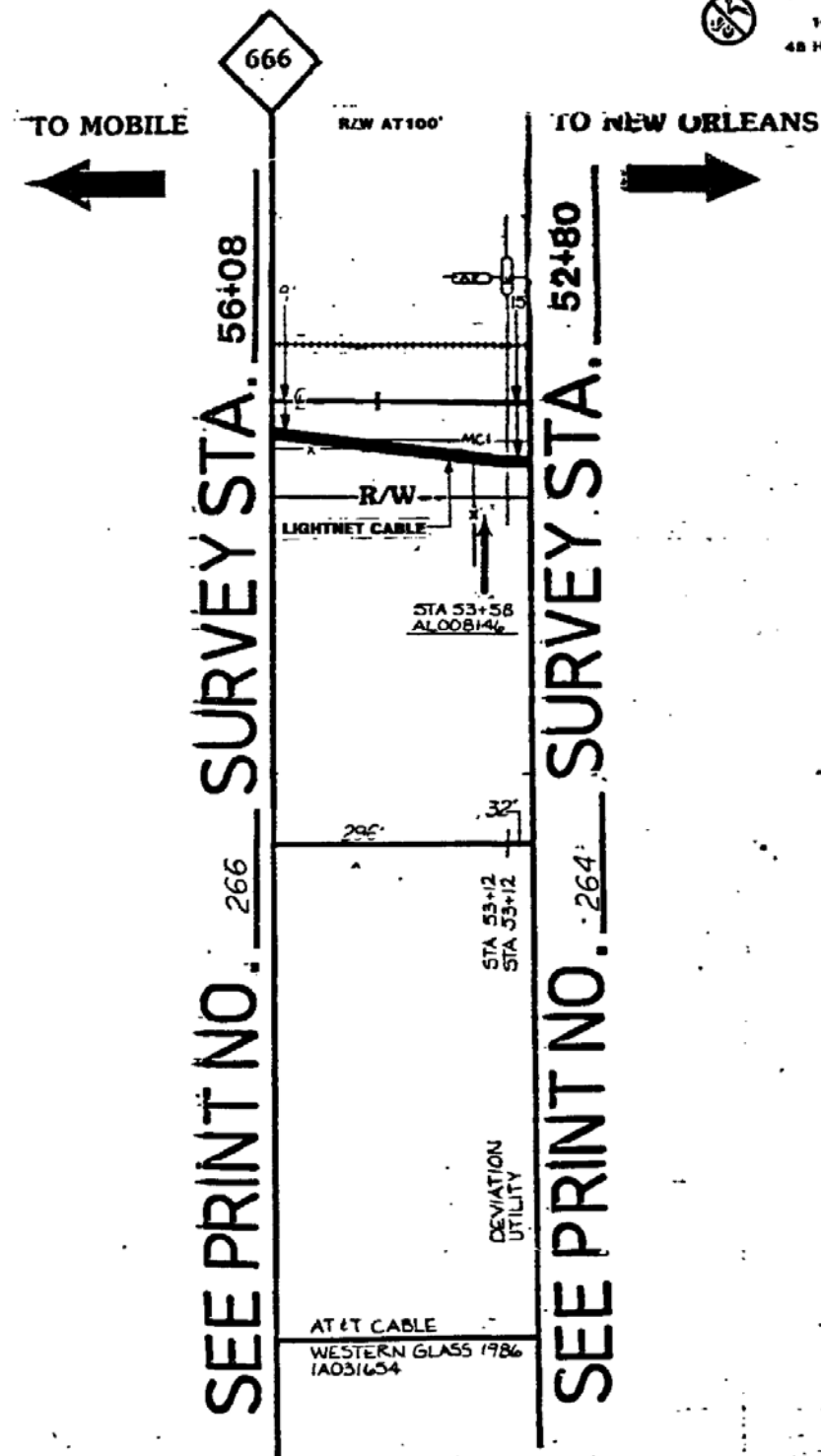
ISSUE DATE	DESCRIPTIONS
12-23-86	AS-BUILT
6-13-91	RELOCATE, ENCASE & INSTALL NEW CABLE W.O. #AL900266N.



MD 657-655 PG 2 OF 3

WBS : 208302	
SEG:	PRINT No: 264 OF 560
REGION: SOUTHEAST	ENG CO: TEI
STATE: ALABAMA	CNTY: MOBILE
APPVD BY:	DATE:
ROUTE NEW ORLEANS, LOUISIANA	
PROJECT TO MOBILE, ALABAMA	
TITLE:	
APPVD BY:	DATE:

PGKD-002604



Call Steve Fraas
1-800-282-8525
48 Hours before digging



MATERIAL LIST

MATERIAL	QUANTITY
CABLE	
GIP4"	328'
GIP2"	
PVC 4"	
PVC 2"	
BURIED CABLE MARKERS	1
HANDHOLE	
INNERDUCT	

PROPRIETARY INFORMATION
NOT FOR DISTRIBUTION

REVISIONS

ISSUE DATE	DESCRIPTIONS
12-23-86	AS BUILT



MP 557-555 PG. 3 OF 3

WBS : 208302

SEG:	PRINT No. 265 OF 560
REGION: SOUTHEAST	ENG. CO: TEI
STATE: ALABAMA	CNTY: MOBILE
APPVD BY:	DATE:



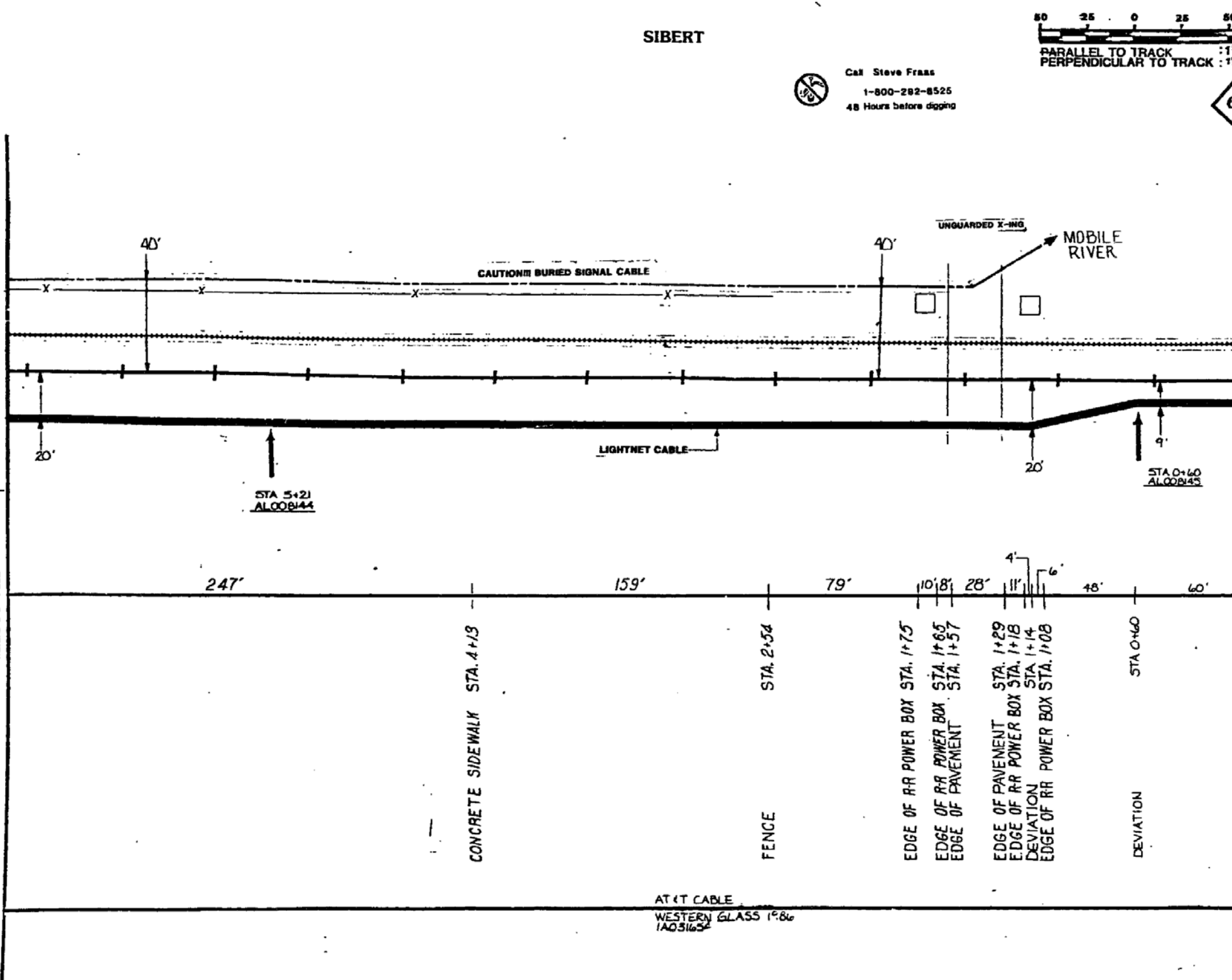
ROUTE NEW ORLEANS, LOUISIANA
PROJECT TO MOBILE, ALABAMA
TITLE:

APPVD BY: DATE:

PGK0-00265

TO MONTGOMERY

SEE PRINT NO. 267 SURVEY STA. 6+60



SEE PRINT NO. 265 SURVEY STA. 0+00

PGKD - 00266

MATERIAL LIST

MATERIAL	QUANTITY
CABLE	
GIP4"	660'
GIP2"	
PVC 4"	
PVC 2"	
BURIED CABLE MARKERS	2
HANDHOLE	
INNERDUCT	
PROPRIETARY INFORMATION NOT FOR DISTRIBUTION	
REVISIONS	
ISSUE DATE	DESCRIPTIONS
12-23-86	AS BUILT
MP 886-885 PG1 OF 8	
WBS : 208202	
SEG:	PRINT No: 266 OF 560
REGION: SOUTHEAST	ENG. CO: TEI
STATE: ALABAMA	CNTY: MOBILE
APPVD BY:	DATE:
ROUTE MOBILE, ALA.	
PROJECT TO MONTGOMERY, ALA.	
TITLE:	
APPVD BY:	DATE: